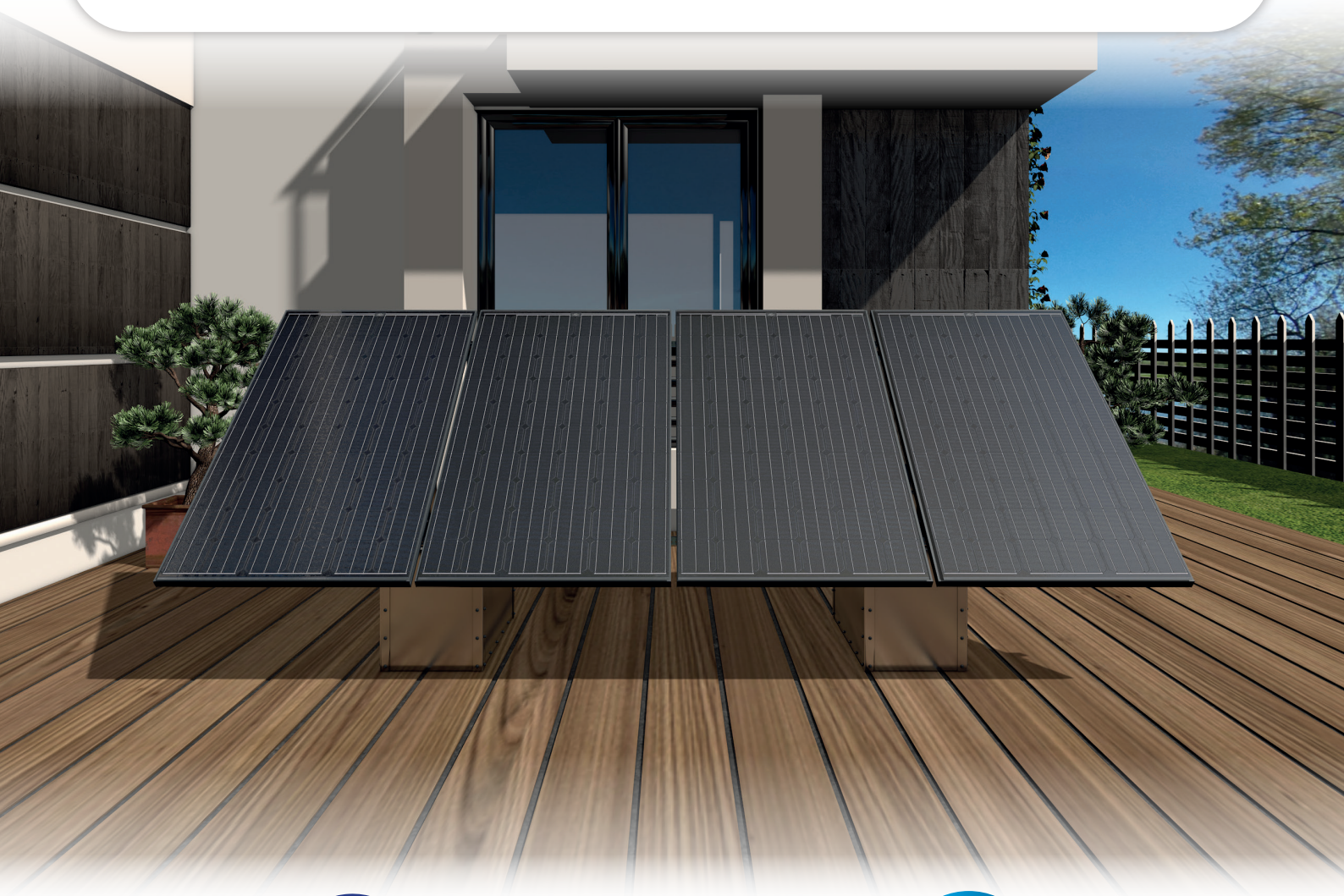




# GSE GROUND SYSTEM™ V3.0

GROUND-MOUNTED SYSTEM FOR FRAMED PHOTOVOLTAIC MODULES

FUNCTIONAL, AESTHETIC,  
QUICK TO INSTALL, SIMPLE...



CHUBB®



[www.gseintegration.com](http://www.gseintegration.com)

## ADVANTAGES



**EASY TO INSTALL**  
No drilling or specific masonry



**COMPATIBLE WITH ALL MODULE SIZE**



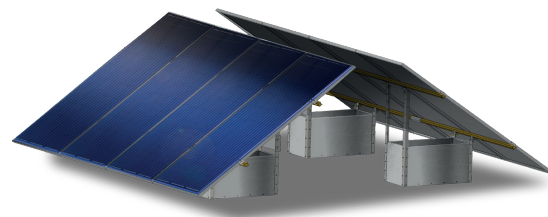
**NO PAPERWORK NEEDED**



**RESOLVES ROOF SPACE PROBLEMS**  
Portrait installation for reduced dimensions



**COMPATIBLE WITH ALL TYPE OF GROUND**  
No problem with grass height

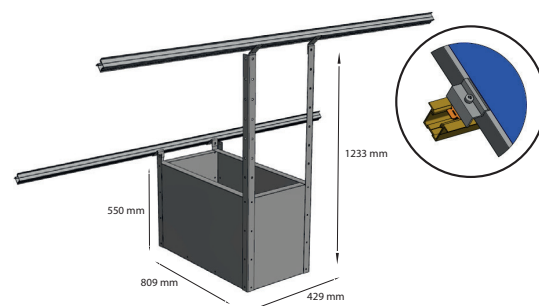


## TECHNICAL SPECIFICATIONS

CONFIGURATION	Portrait installation in multiples of 2 modules
INCLINATION	Adjustable inclination from 7° to 40°
MATERIAL	Galvanized steel
WEIGHT WITHOUT BALLAST	8 kg / module
BALLAST SYSTEM	Sand, gravel, cement, concrete slab...
SAFETY	Possibility to use microinverters: very low voltage operation for safe wiring
RAIL SIZE AVAILABLE	2.40 aluminum rail

## MOUNTING METHOD

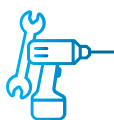
**TRADITIONAL MOUNTING ON ALUMINUM RAIL (ON-ROOF RAIL)**  
Fixing of the modules using clamps



**CONNECTOR**  
**GSE** Intégration  
THE INSTALLER'S BEST FRIEND



**TRAINING**



**TOOLS AND CALCULATION**



**HELP CENTER**



**DOCUMENTATIONS**

**GSE**  
Intégration

155-159 rue du Docteur Bauer - 93400 Saint-Ouen - France

[www.gseintegration.com](http://www.gseintegration.com)

