

INTEGRATION FAKRO & GSE



FLASHINGS FOR INTEGRATING FAKRO WINDOWS WITH THE PV PANEL MOUNTING SYSTEM PROVIDED BY GSE INTEGRATION

Consistently increasing ecological awareness in society and desire to become independent from expensive energy carriers make renewable energy sources more and more frequently chosen alternatives. One of the most popular and versatile are photovoltaic panels.

Care for the natural environment has always accompanied the actions undertaken by FAKRO, which is why for many years we have been developing solutions that enable integrating our roof windows with roof-integrated photovoltaic systems (BIPV – Building Integrated Photovoltaics).

One of these solutions includes a flashing for integrating FAKRO roof windows with the GSE Integration PV panel mounting system. It allows to replace one of the GSE modules with a window featuring a size that perfectly fits into the available space between the other modules.

Integration flashing advantages:

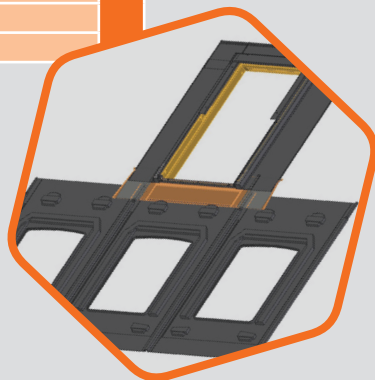
- 1. Quick and simple way to install** the window and connect it with plastic modules of the GSE system.
- 2. Highly versatile** as one flashing size works with many sizes of the GSE modules.
- 3. Flashing** available for window sizes:
 - 78x140
 - 94x140
 - 134x78

No.	Art. no.	Window size	Flashing compatible with GSE modules marked as follows	
1	65837	78x140	1640_992	Vertical GSE modules
			1640_1001	
			1640_1001_33	
			1686-1700_1016	
			1710_1000	
			1710_1005	
			1710_1010	
			1710_1020	
			1710_1025	
			1710_1030	
			1710_1040	
			1710_1030	
			1710_1040	
2	65838	94x140	1710_1050	
			1710_1055	
			1710_1060	
3	65840	134x78	1640_992	Horizontal GSE modules
			1650_992	
			1660_992	
			1670_992	
			1675_992_33	
			1680_992	
			1686_1016	
			1700_1016	
			1665_1020	
			1675_1020	
			1680_1020	
			1685_1020	
			1690_1020	
			1695_1020	
			1700_1020	
			1705_1020	
			1720_1020	
			1740_1020	

version 2012:



version 2020:



GSE IN-ROOF SYSTEM – makes it possible to install standard photovoltaic panels as a basic roofing. It allows to replace standard roof covering materials such as slates or clay tiles, thus reducing the costs of purchasing the roofing material and contributing to reduced load on the roof.