



GSE DELTA Y™

Isolated triangular piece
specific to ventilation

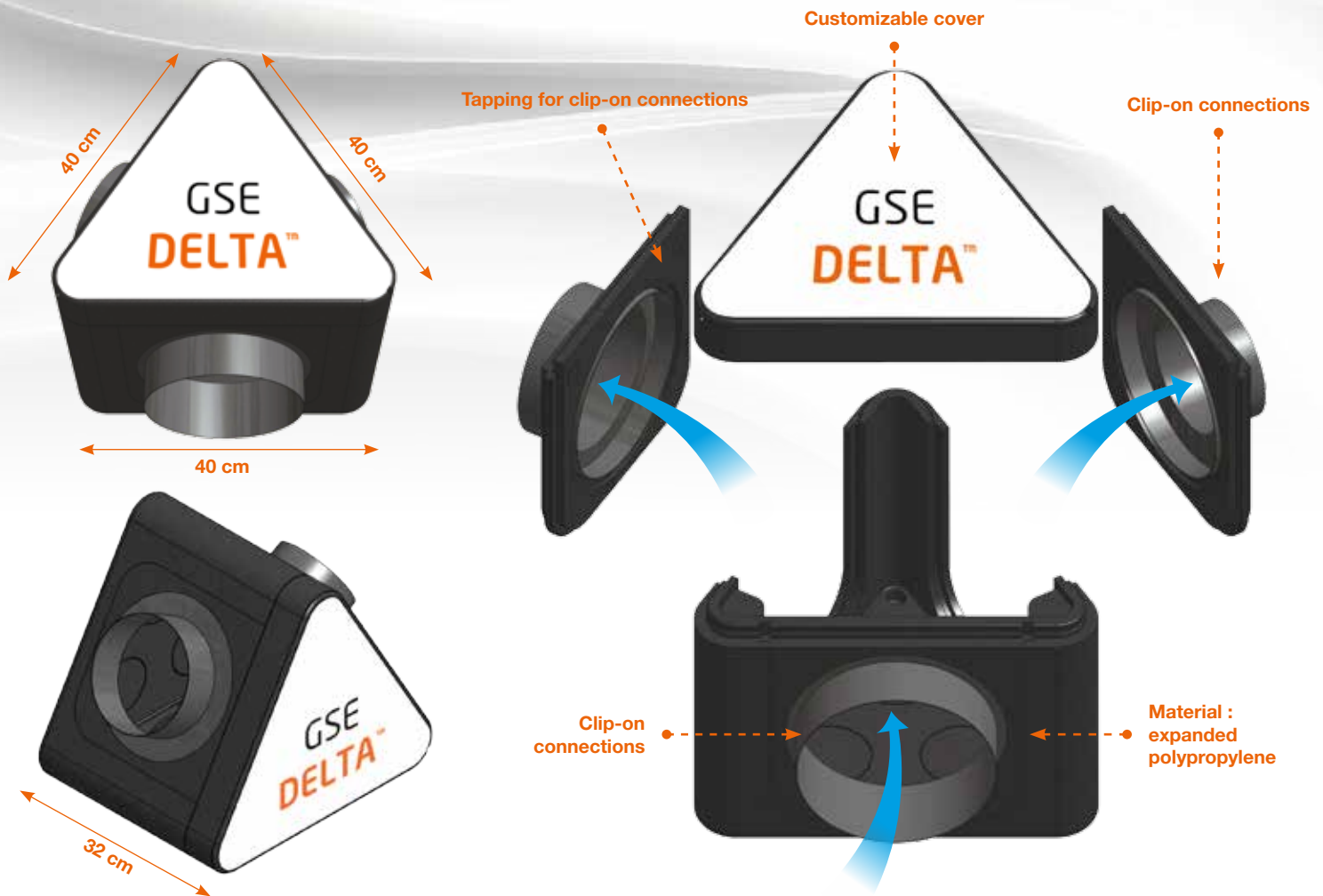


GSE DELTA Y™

Isolated triangular piece specific to ventilation



DELTA Y



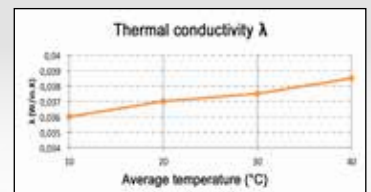
- Possibility to connect 3 tappings of Ø 125/160/200mm to choose depending on the faces
- Piece isolated by its 25mm thickness
- Extremely light : 1.2kg
- Customizable cover depending on quantities

Technical features of the deltas :

Description : isolated triangular piece specific to uses relating to hot or cold ventilation

Size : L40cm x W40cm x H32cm

Material : expanded polypropylene ($\lambda=0,037W/m.K$)



TAPPING FOR CLIP-ON CONNECTIONS Ø 75/80-90-100*/125/160/200mm



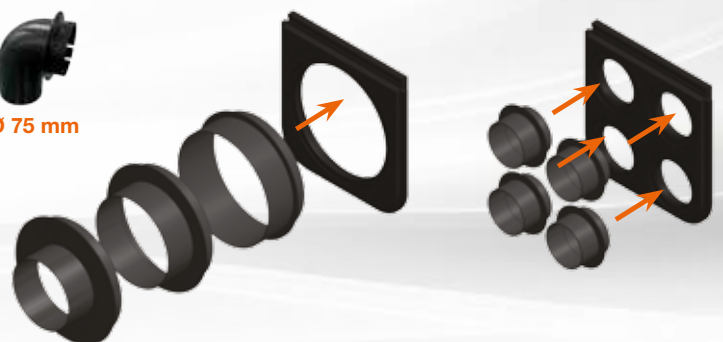
Technical features of tapping and connections :

Description : removable tapping with clip-on connections

Material : EPP (tapping) / PP (connections)

Available diameters : Ø75/125/160/200mm

*Ø 80/90/100mm upon request



www.gseintegration.com